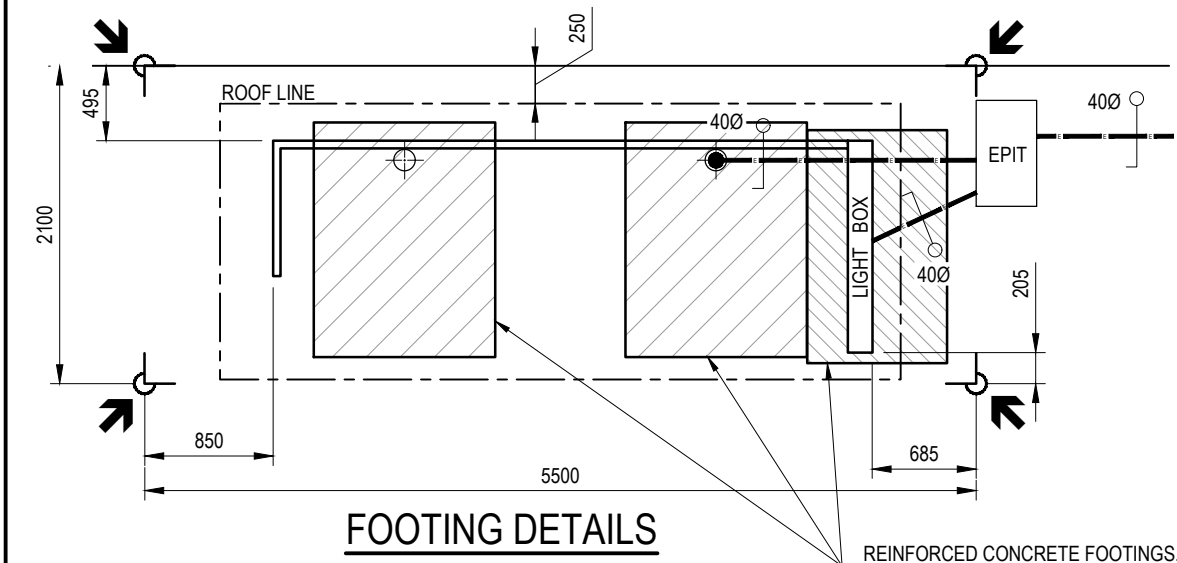


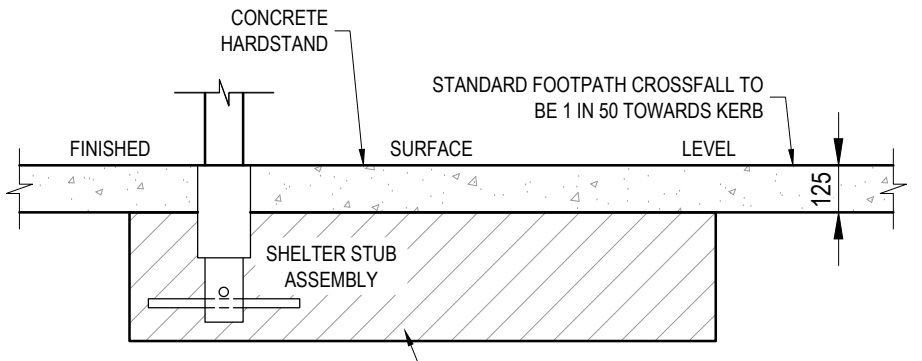
SITE PLAN

N.T.S.



FOOTING DETAILS

N.T.S.



TYPICAL FOOTING SECTION

N.T.S.

LEGEND

- SETOUT POINTS (INCLUDING FINISHED SURFACE LEVELS) TO BE MARKED ON SITE FOR oOh!media TO CONSTRUCT FOOTINGS
- Ø40 uPVC ORANGE (HD) CONDUIT WITH CABLE PROTECTION COVER STRIP
- NOMINAL FACE OF KERB
- ALLOCATED WHEELCHAIR SPACE (1300x800)
- WARNING TACTILE GROUND SURFACE INDICATORS AS PER AS/NZS1428.4.1 (REFER NOTES 11a AND 12)
- DIRECTIONAL TACTILE GROUND SURFACE INDICATORS AS PER AS/NZS1428.4.1 (REFER NOTES 11 AND 12)

TABLE 1: LED LUMINAIRES EFFICACY REQUIREMENTS

EFFICACY	LED LAMPS		LED LUMINAIRES (SMALL)	LED PLANAR, BATTENS & TROFFERS
	DIRECTIONAL & NON-DIRECTIONAL LAMPS	LINEAR LED (TUBE)	LUMINOUS FLUX ≥100 lm & <2,500 lm	LUMINOUS FLUX: ≥2,500 lm & <5,000 lm
	≥85 lm/W	≥110 lm/W	≥85 lm/W	≥110 lm/W

NOTES:

1. TO BE READ IN CONJUNCTION WITH oOh!media DRAWINGS. oOh!media SHELTERS ARE INSTALLED AND MAINTAINED BY oOh!media UNDER CONTRACT WITH BRISBANE CITY COUNCIL.
2. BOARDING POINT AREA TO HAVE CROSSFALL OF 1 IN 40 MAX. WHERE BOARDING POINT HAS A CROSSFALL OF GREATER THAN 1 IN 40, REFER TO COUNCIL FOR ALTERNATIVE OPTIONS.
3. MINIMUM CLEAR ACCESS PATH OF 1.2M REQUIRED BETWEEN ALL INFRASTRUCTURE AND ALLOCATED WHEELCHAIR SPACES.
4. ELECTRICITY SUPPLY TO SHELTER AND/OR LIGHT BOX TYPICALLY TARIFF 91 - OTHER (UNMETERED) OR AS DIRECTED BY THE SHELTER OPERATOR (oOh!media). BILLING ARRANGEMENT FOR THE SHELTER ELECTRICITY SUPPLY TO BE AS ARRANGED BY SHELTER OPERATOR.
5. 600 MIN. COVER TO CONDUITS.
6. CONCRETE, HARDSTANDS TO BE 125mm THICK GRADE N32 CONCRETE BROOM FINISHED SURFACE (FOR SLIP RESISTANCE). SL72 MESH PLACED CENTRALLY.
7. ALTERNATIVE SURFACE FINISHES (i.e. EXPOSED AGGREGATE OR PAVERS) TO COMPLY WITH DISABILITY STANDARD FOR LUMINANCE CONTRAST AND/OR AESTHETICS FOR 'CITY SIGNATURE' REQUIREMENTS, AS REQUIRED.
8. THE ALIGNMENT AND DEPTHS OF EXISTING SERVICES SHALL BE PROVEN ON SITE PRIOR TO ANY EXCAVATION. CONTACT "DIAL BEFORE YOU DIG" ON TEL. NO. 1100 FOR THE LOCATION OF SERVICE AUTHORITY ASSETS.
9. POINT OF SUPPLY PRIORITY:
 1. EP/ELP (ELECTRICITY POWER/LIGHT POLE)
 2. EPIL (ELECTRICITY PILLAR)
 3. EPIT (ELECTRICITY No.4 PIT)
 4. LP (STREET LIGHT POLE)
10. WHERE PLANTINGS ARE PROVIDED, USE ONLY GROUND COVER OR LOW SHRUBS (<0.5m HIGH). TREES FOR SHADE SHOULD BE LONG-TRUNKED WITH MINIMUM BRANCH HEIGHT OF 4.5m. PLANTINGS SHOULD NOT OBSTRUCT LINE OF SIGHT BETWEEN APPROACHING VEHICLES AND LIGHT BOX DISPLAY. (COUNCIL TO APPROVE LAYOUT).
11. CUTTING OF TGSIS:
 - a. NO WARNING TGSIS SHALL BE CUT;
 - b. CUTTING OF DIRECTIONAL TGSIS SHALL BE KEPT TO A MINIMUM;
 - c. WHERE DIRECTIONAL TGSIS ARE TO BE CUT, THEY SHALL BE CUT IN ADJACENT PAIRS;
 - d. THE MINIMUM LENGTH OF EACH OF THE CUT TGSIS PAIRS SHALL NOT BE LESS THAN 150mm, MEASURED IN THE DIRECTION OF THE PATH OF TRAVEL;
 - e. THE PAIR OF DIRECTIONAL TGSIS AT THE END OF THE PATH OF TRAVEL SHALL NOT BE CUT.
12. TGSIS TYPE, COLOUR AND INSTALLATION AS PER BSD-5218.
13. STORMWATER SOLUTION/DESIGN TO BE ASSESSED ON A SITE-BY-SITE BASIS.
14. LONGITUDINAL GRADE TO MATCH ROAD.
15. WASTE BIN TO BE APPROVED BY COUNCIL.
16. ALL DIMENSIONS ARE IN MILLIMETERS (U.N.O.).

LIGHTING NOTES:

- L1. ILLUMINATION WITHIN THE BUS SHELTER TO COMPLY WITH AS/NZS1158.3.1 - LIGHTING FOR ROADS AND PUBLIC SPACES - PART 3.1: PEDESTRIAN AREA (CATEGORY P) LIGHTING - PERFORMANCE AND DESIGN REQUIREMENTS SUB CATEGORY PA1.
- L2. LUMINAIRE/LIGHT IS TO BE POSITIONED AT THE FRONT OF THE SHELTER FROM THE ROOF, LIGHTING IS TO NOT ADVERSELY IMPACT ON THE ADJACENT TRAFFIC.
- L3. LUMINAIRE IS TO BE PRE-WIRED INTO THE SHELTER.
- L4. SWITCHBOARD FOR THE SHELTER IS TO BE LOCATED IN THE REAR POST. PE CELL IS TO BE LOCATED ON THE SAME POST IN A POSITION THAT WILL NOT BE IMPACTED BY LIGHTING IN THE PROXIMITY.
- L5. LIGHT SOURCE IS TO BE LED WITH A CORRELATED COLOUR TEMPERATURE OF 4000K AND A COLOUR RENDERING INDEX (CRI) Ra ≥80.
- L6. LED LUMINAIRES OR LAMPS USED FOR BRISBANE CITY COUNCIL SHALL COMPLY WITH THE FOLLOWING MINIMUM ENERGY PERFORMANCE STANDARDS (MEPS) EFFICACY REQUIREMENTS AS SHOWN IN TABLE 1. THE EFFICACY CALCULATION SHALL BE BASED ON INITIAL LUMINOUS FLUX MEASUREMENTS ACCORDING TO CIE S 025/E (OR IES LM-79).
- L7. THE LUMINAIRE DISTRIBUTOR SHOULD ALSO SUPPLY PHOTOMETRIC DATA (IN IES AND/OR CIE FORMAT) FROM A NATA ACCREDITED LABORATORY OR A LABORATORY, WHOSE ACCREDITATION IS RECOGNISED BY NATA UNDER THE MUTUAL RECOGNITION SCHEME.
- L8. THERE IS NO REQUIREMENT FOR ADDITIONAL PUBLIC SAFETY LIGHT (STREET LIGHT) NEAR A BUS SHELTER, OVER AND ABOVE LIGHTING REQUIRED TO COMPLY WITH AS/NZS1158.



BRISBANE CITY COUNCIL STANDARD DRAWING		PUBLISH DATE MAR 2021	
oOh!media MINI BOULEVARD BUS SHELTER		SCALE NOT TO SCALE	
		DRAWING NUMBER BSD-2107	
ORIGINAL SIZE A3	REVISION E		